

**CORNERSTONE RESOURCES**

**LEGEND**

**Devonian to Carboniferous**

- Sedimentary and volcanic rocks
- Granitoid suites

**Silurian**

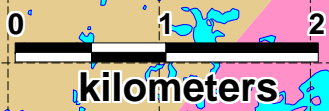
- Silurian to Devonian granitoid suites

**Cambrian to Ordovician**

- Mafic intrusions
- Siliciclastic sediments

- Cornerstone Resources Claims
- Other Claims

- ★ Gold Deposit
- Gold Prospect



**CAPE RAY GOLD PROPERTY**

5 294 000 mN

5 292 000 mN

5 290 000 mN

5 288 000 mN

350 000 mE

352 000 mE

354 000 mE

356 000 mE

358 000 mE

360 000 mE

362 000 mE

Isle aux Morts

#4 Zone

#41 Zone

#51 Zone

Windowglass Hill

Big Pond Zone

CAPE RAY FAULT