

LITHOLOGY

Mid Mesoproterozoic

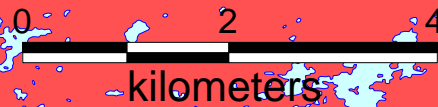
- Siltstone, shale, quartzite, minor dolomite (Seal Lake Group)
- Subaerial basalt flows (Seal Lake Group)
- Arkose, quartzite (Seal Lake Group)
- Peralkaline rhyolite (Letitia Lake Group)
- Gabbro sills
- Peralkaline granite and syenite intrusions (Red Wine Intrusive Suite, ca. 1337 Ma)

Late Paleoproterozoic

- Granite, quartz monzonite, granodiorite, syenite
- Granite, granitoid

★ Mineral Occurrences

☐ Cornerstone Resources Map Staked Claims 2009



★Cu

★Pyr

★Cu

★ Michelin #1:
Nb

★ Mann #2:
Nb

★ Mann #1:
Be

★ Pyr
★ Pb

★Pyr

★Cu

★Cu

★Cu

Letitia Lake

Bessie Lake

Two Tom Lake:
REE

★Fl