

Figure 1: Plan view of the Bramaderos Project porphyry gold-copper targets as defined by gold-in-soil anomalies and magnetic anomalies.

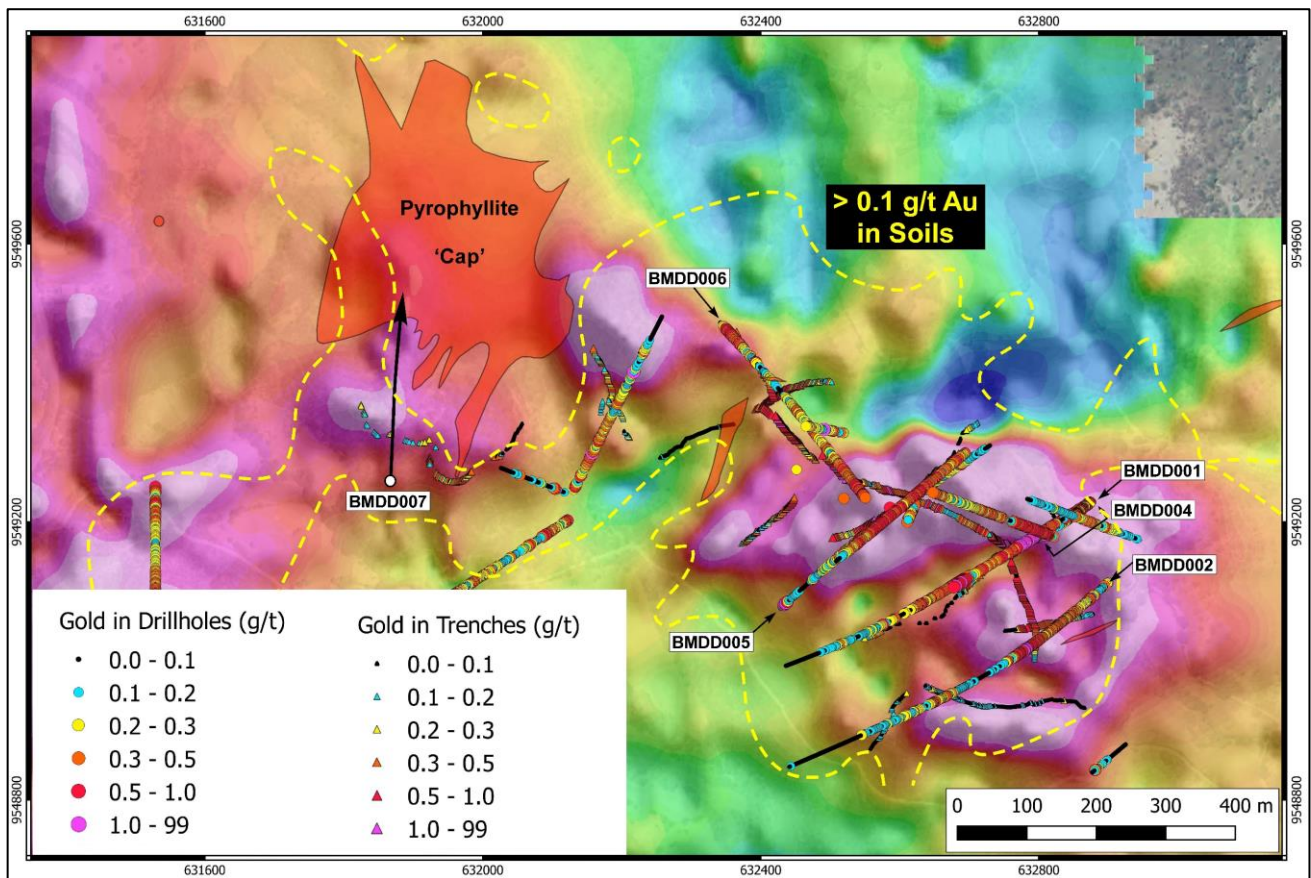


Figure 2: Plan view and drill status plan of the Bramaderos Main porphyry target showing recently processed ground magnetic data as Reduced-to-Pole (RTP) imagery. The anomaly shape in the area of drilling BMDD001 – 007 has been refined from the original interpretation of the heli-magnetics data and is currently undergoing detailed review.

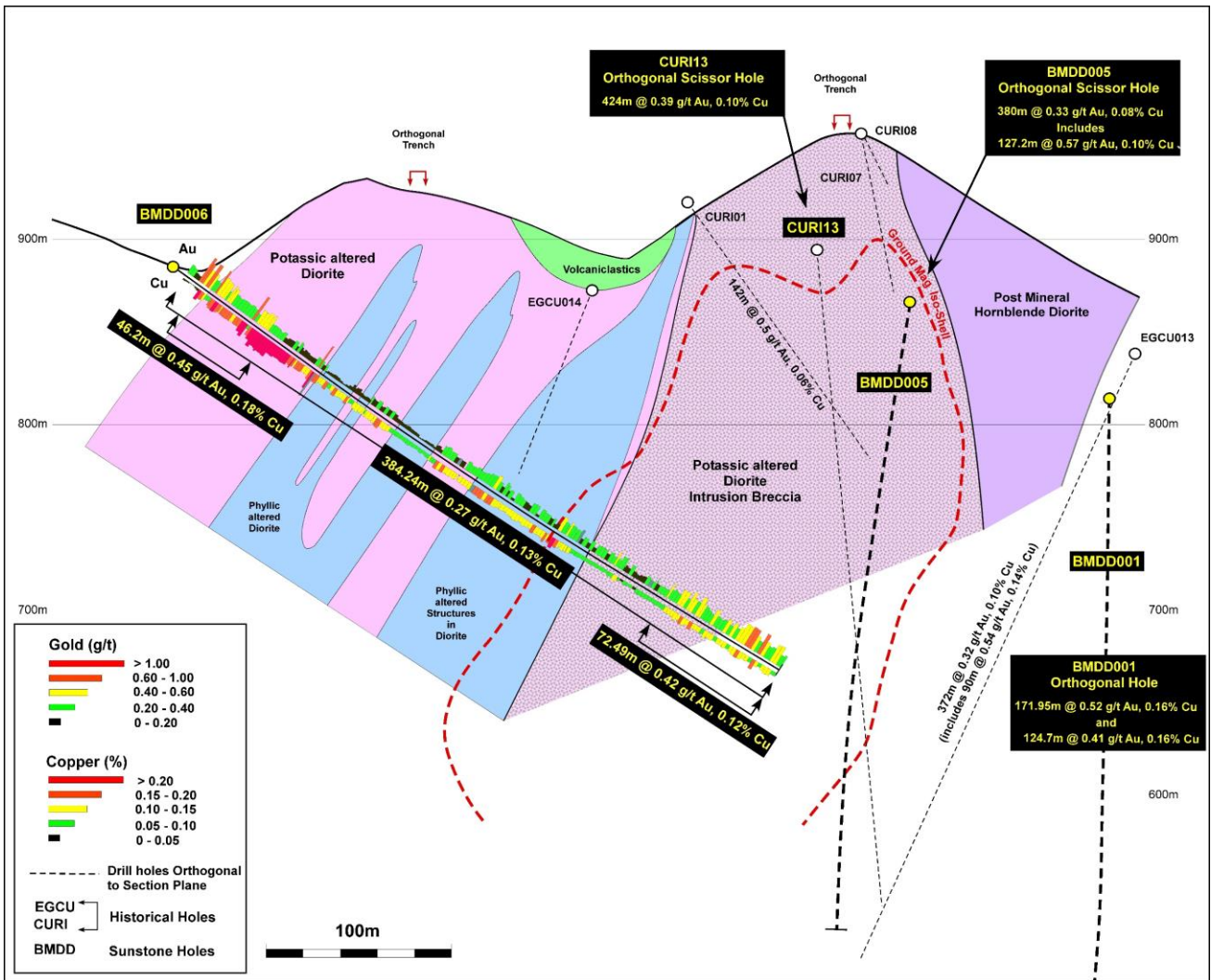


Figure 3: Cross section on trace of hole BMDD006, and showing that portion of BMDD005 that is on section.